



سهيل للتشكيلات المعدنية  
SUHAIL METAL FORMINGS

Powered by **TMS**

# SCAFFOLDING & METAL FORMINGS CATALOGUE



سهييل للتشكيلات المعدنية  
SUHAIL METAL FORMINGS

Powered by  TCS

# TABLE OF CONTENT

<b>CONTENTS</b>	
<b>HISTORY</b>	<b>4</b>
<b>CHOICE</b>	<b>5</b>
<b>QUALITY</b>	<b>6</b>
<b>INNOVATION</b>	<b>7</b>
<b>SCAFFOLDING</b>	<b>8</b>
<b>FORMWORKS</b>	<b>17</b>
<b>OTHER PRODUCTS</b>	<b>33</b>



# A LITTLE BIT OF HISTORY

Suhail Metal Formings is a thriving Qatari company in the field of steel systems and profiles for the building sector. We offer solutions for profiles and accessories dedicated to scaffoldings & formworks indoors and outdoors. The wide range of products and services that it provides has built for the company excellent reputation in the market. Thanks to the manufacturing based on quality, choice, and innovation, while using cutting-edge technology to manufacture scaffolding.

# CHOICE

To respond to any request, We offer a wide range of profiles and accessories using steel material and standardized product dimensions that are modular for ease of erection and dismantling. Through advanced production lines, and huge internal and external storage capacity, we can satisfy customers' requests rapidly. And with the help of our extensive distribution network, we can provide our products all over our main market in Qatar, the gulf region, and the middle east.

# QUALITY

Both at the level of quality of the offered products and the raw materials used in manufacturing, we honor our commitment to provide the clients with products of an impeccable level of quality. And this commitment extends to choosing our suppliers and partners who we select for their capabilities in their field. This constant search for the best allows us to follow the well-known standards, and make sure that our products are of utmost quality, with extensive quality testing during the manufacturing and finishing of the products.

# INNOVATION

As we strive to supply the market with highest quality products, we continually look for improved and innovative manufacturing methods that could reduce the price while maintaining the highest quality, this includes the extensive use of engineering and design software to fulfill customer needs, and make sure they are satisfied with the resulting benefits of using our products.



سهيل للتشكيلات المعدنية  
SUHAIL METAL FORMINGS

Powered by **TMS**



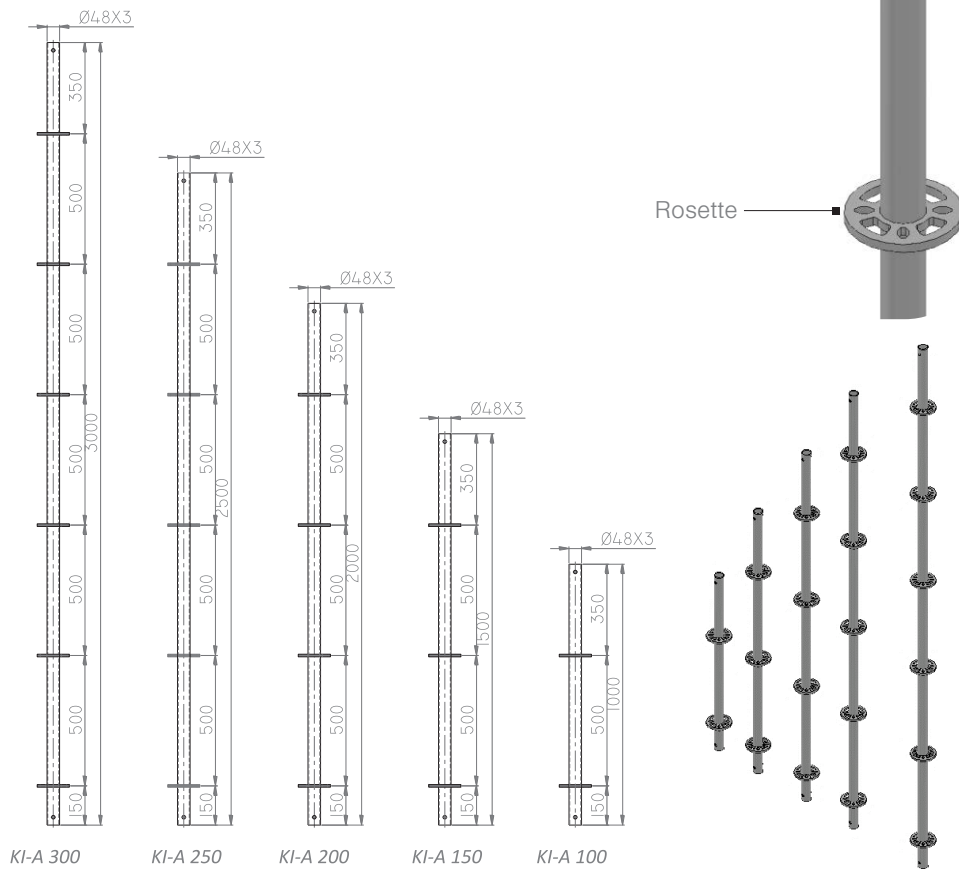
# SUHAIL<sup>W.L.L.</sup> SCAFFOLDING

Powered by **TMS**



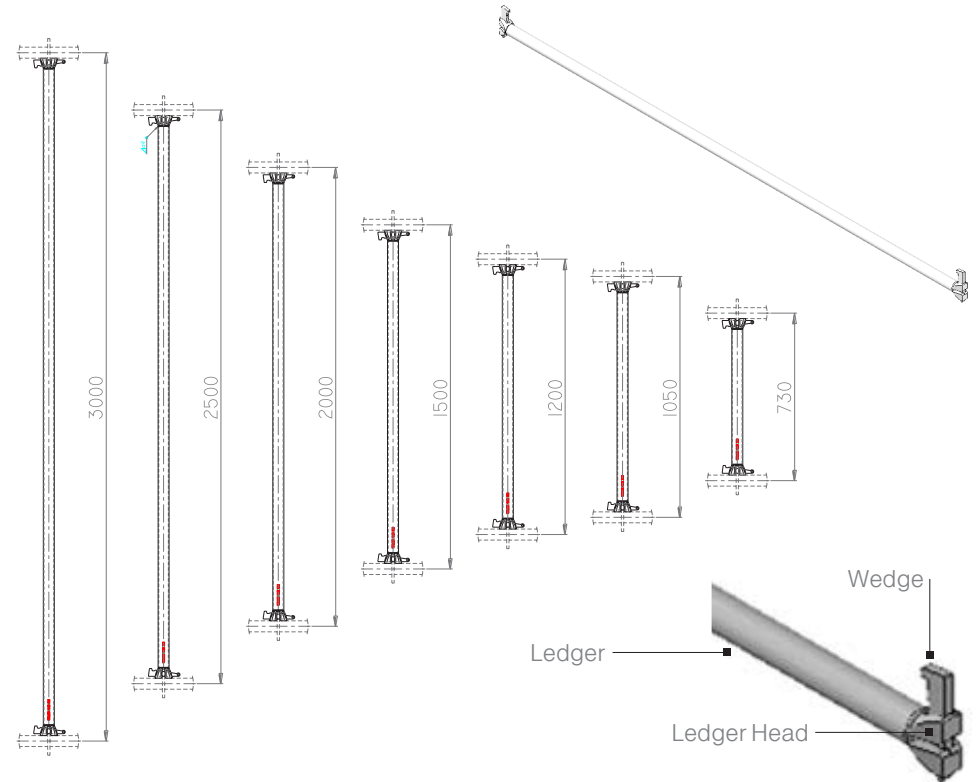
# KAM'A SHORING & SCAFFOLDING

## KAM'A STANDARDS



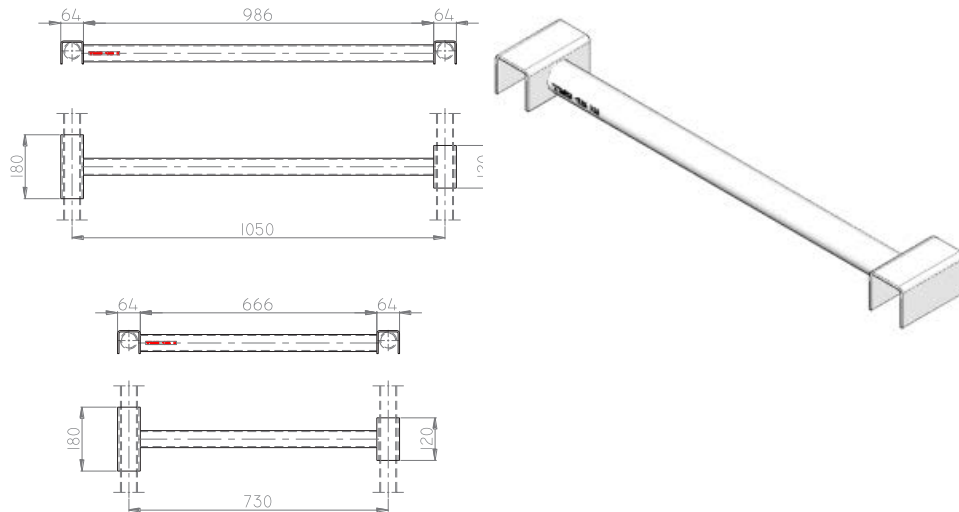
Stock Name	Stock Code	Material Description	Unit Weight (kg)
NKI-A G 100	N010 118 00100	Kam'a Standards, 100	4,45
NKI-A G 150	N010 118 00150	Kam'a Standards, 150	6,68
NKI-A G 200	N010 118 00200	Kam'a Standards, 200	8,90
NKI-A G 250	N010 118 00250	Kam'a Standards, 250	11,13
NKI-A G 300	N010 118 00300	Kam'a Standards, 300	13,35

## KAM'A LEDGER & TRANSOM



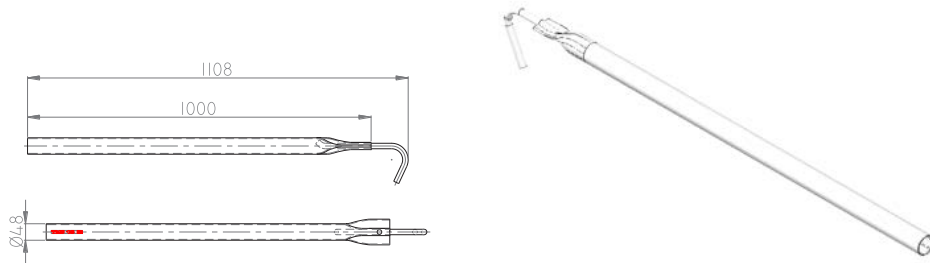
Stock Name	Stock Code	Material Description	Unit Weight (kg)
NKI-Y G 73	N010 118 01073	Kam'a Ledger & Transom 73	2,75
NKI-Y G 105	N010 118 01105	Kam'a Ledger & Transom 105	3,85
NKI-Y G 120	N010 118 01120	Kam'a Ledger & Transom 120	4,04
NKI-Y G 150	N010 118 01150	Kam'a Ledger & Transom 150	4,88
NKI-Y G 200	N010 118 01200	Kam'a Ledger & Transom 200	6,29
NKI-Y G 250	N010 118 01250	Kam'a Ledger & Transom 250	7,70
NKI-Y G 300	N010 118 01300	Kam'a Ledger & Transom 300	9,11

### TRANSOM



Stock Name	Stock Code	Material Description	Unit Weight (kg)
NKI-G G 73	N010 118 02073	Transom 73	2,80
NKI-G G 105	N010 118 02105	Transom 105	3,90

### HOOK TYPE - TIE EQUIPMENT



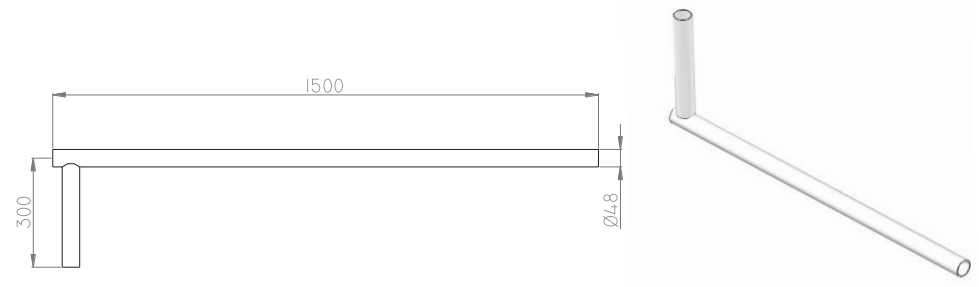
Stock Name	Stock Code	Material Description	Unit Weight (kg)
NSF-B G 100	N010 122 02667	ScaffFAST-D Hook Type Tie Equipment 100	4,82

### DIAGONAL BRACING



Stock Name	Stock Code	Material Description	Unit Weight (kg)
NKI-C G 150x150	N010 118 13150	Kam'a Diagonal Element 150x150	8,48
NKI-C G 200x150	N010 118 13200	Kam'a Diagonal Element 200x150	9,47
NKI-C G 250x150	N010 118 13250	Kam'a Diagonal Element 250x150	10,73
NKI-C G 150x200	N010 118 03150	Kam'a Diagonal Element 150x200	9,41
NKI-C G 200x200	N010 118 03200	Kam'a Diagonal Element 200x200	10,44
NKI-C G 250x200	N010 118 03250	Kam'a Diagonal Element 250x200	10,87

### PARAPET - TIE EQUIPMENT



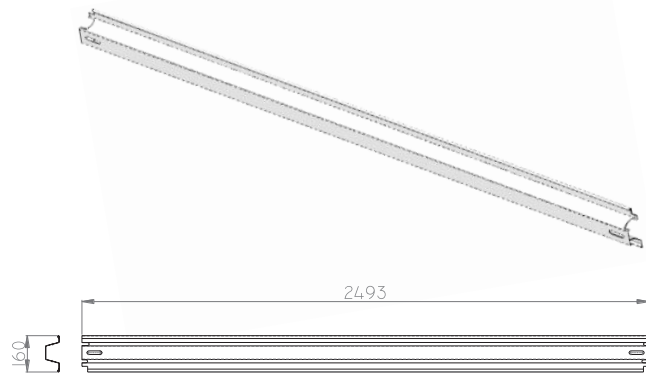
Stock Name	Stock Code	Material Description	Unit Weight (kg)
NIS-B G	N010 122 00132	Parapet Tie Equipment	3,70

### KAM'A STANDARD CONNECTOR



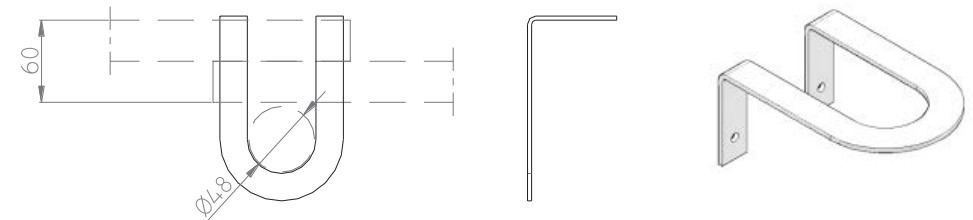
Stock Name	Stock Code	Material Description	Unit Weight (kg)
NKP-E B	N010 017 01680	Scaffolding Connector, for Ø48, TS EN 73-1	0,73

### TOE BOARD (STEEL)



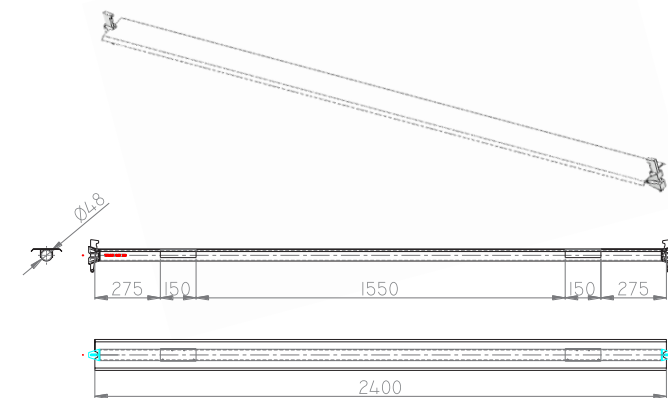
Stock Name	Stock Code	Material Description	Unit Weight (kg)
NKP-S G 75	N010 117 02680	Kup'a - Kam'a Steel Toeboard, 75	1,45
NKP-S G 100	N010 117 02681	Kup'a - Kam'a Steel Toeboard, 100	1,85
NKP-S G 125	N010 117 02682	Kup'a - Kam'a Steel Toeboard, 125	2,30
NKP-S G 150	N010 117 02683	Kup'a - Kam'a Steel Toeboard, 150	2,70
NKP-S G 200	N010 117 02684	Kup'a - Kam'a Steel Toeboard, 200	3,55
NKP-S G 250	N010 117 02685	Kup'a - Kam'a Steel Toeboard, 250	4,40
NKP-S G 300	N010 117 02686	Kup'a - Kam'a Steel Toeboard, 300	5,25

### KICKER HOLDER



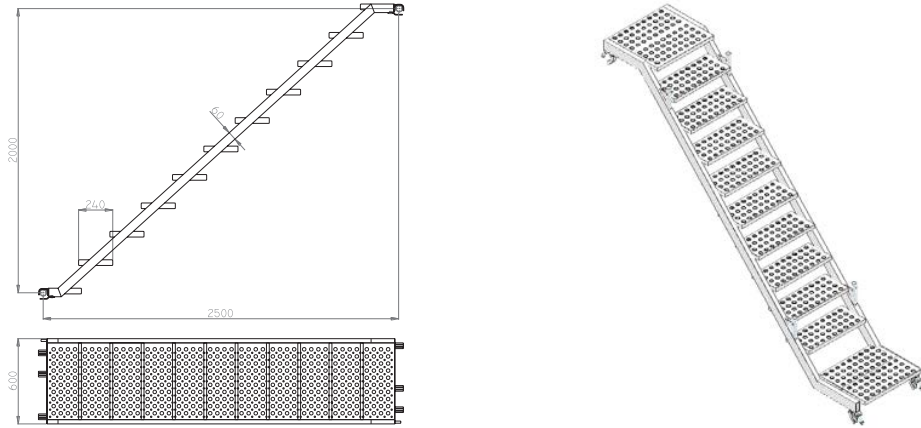
Stock Name	Stock Code	Material Description	Unit Weight (kg)
NSF-T B	N010 022 02679	ScafFAST-D Toeboard Frame Connector	0,34

### BAND PLATFORM



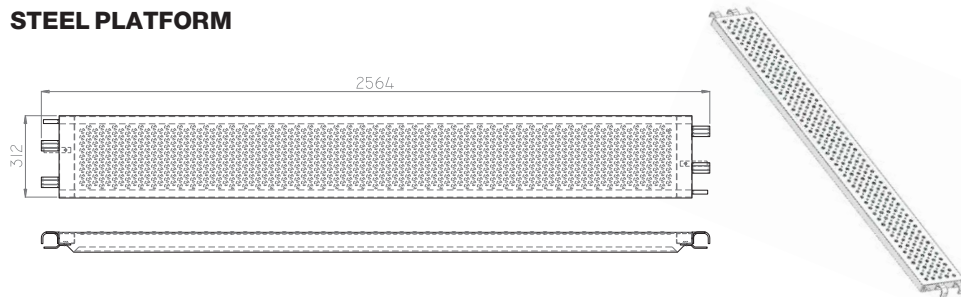
Stock Name	Stock Code	Material Description	Unit Weight (kg)
NKP-B G 112	N010 120 313112	Band Platform 120	2,10
NKP-B G 115	N010 120 313115	Band Platform 150	2,45
NKP-B G 120	N010 120 313120	Band Platform 200	3,25
NKP-B G 125	N010 120 313125	Band Platform 250	4,00
NKP-B G 130	N010 120 313130	Band Platform 300	4,95

### FACADE SCAFFOLD STAIR



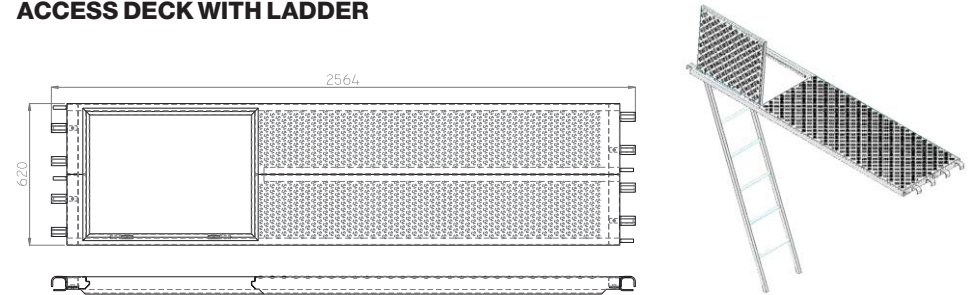
Stock Name	Stock Code	Material Description	Unit Weight (kg)
NKP-M G	N010 117 01690	ScaffAST-D Facade Scaffold Stairs	49,50

### STEEL PLATFORM



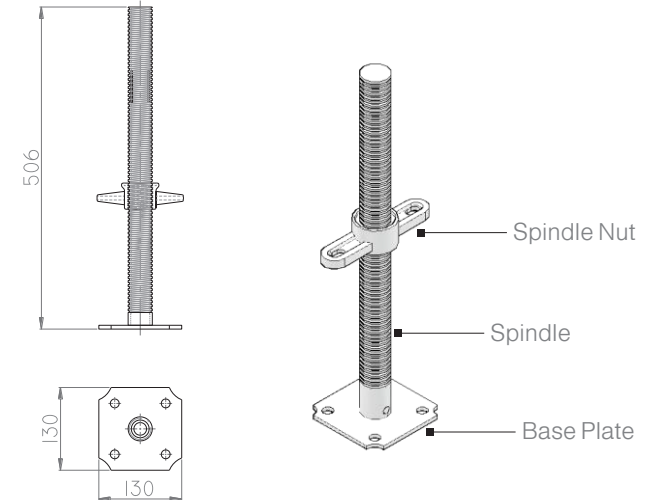
Stock Name	Stock Code	Material Description	Unit Weight (kg)
NKL-B G 312	N010 120 13012	Steel Platform 312, 30x120 cm	9,90
NKL-B G 315	N010 120 13015	Steel Platform 315, 30x150 cm	12,25
NKL-B G 320	N010 120 13020	Steel Platform 320, 30x200 cm	16,50
NKL-B G 325	N010 120 13025	Steel Platform 325, 30x250 cm	19,90
NKL-B G 330	N010 120 13030	Steel Platform 330, 30x300 cm	24,20

### ACCESS DECK WITH LADDER



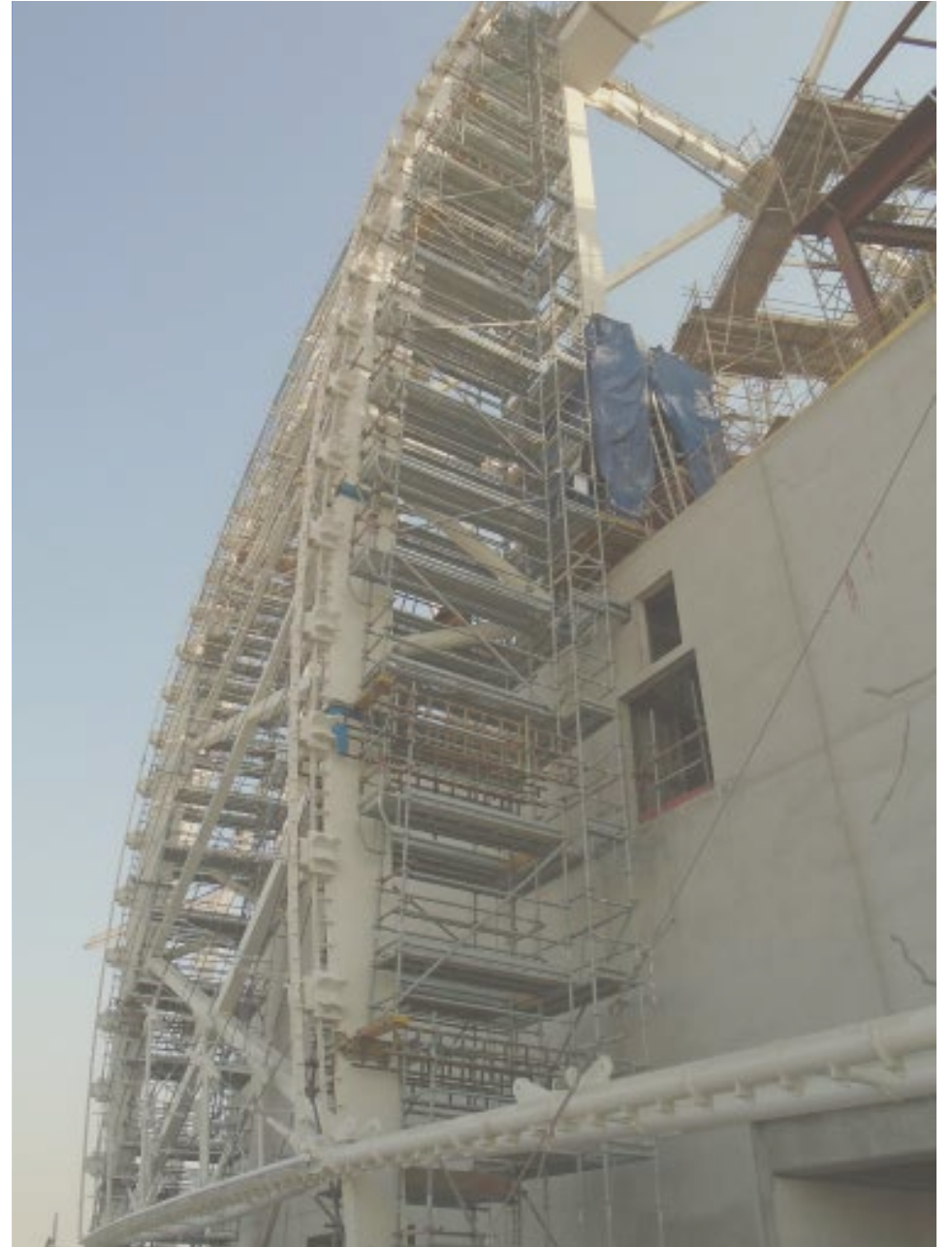
Stock Name	Stock Code	Material Description	Unit Weight (kg)
NMP-B G 625	N010 120 16025	Access Deck with Ladder 625, 60x250	58,67

### BASE SPINDLE



Stock Name	Stock Code	Material Description	Unit Weight (kg)
NMA-A G 38x500 bru.	N010 113 03805	Base Spindle, Ø38x500, Tube	2,75
NMA-A G 38x600 bru.	N010 113 03806	Base Spindle, Ø38x600, Tube	3,08
NMA-A G 38x750 bru.	N010 113 03807	Base Spindle, Ø38x750, Tube	3,59













**SUHAIL**<sup>W.L.L.</sup> **FORMWORKS**  
Powered by **TMS**

# FLAT WALL & COLUMN FORMS

These forms are used for standard civil engineering applications, in accordance with DIN EN 18202 (general buildings specifications) and DIN EN 18218 (Pressure of fresh concrete on vertical formwork). The panels of these forms are either 18- or 20- mm birch plywood.

The steel frame profiles are made with the latest high technology. Easy and simple connection system allows for less workmanship.



VINC'I is a steel frame formwork system composed of high strength rectangular tube profiles, which could be easily combined with TAMON panel locks. The steel frame profiles are designed to be able to connect at any point with the other panel.

Panel facing is the plastic coated Birch Plywood providing higher durability and longer life.



Panel widths are 30, 45, 60, 75, 90, 120, 240cm. Whereas the heights are chosen as 330, 300, 270, 180, 150 and 120cm. The panel corners bear solid steel pieces which gives extra stiffness while also delivering strong inserts for levering and lifting holes for handling. Only the solid corner would double the panel life against similar systems.

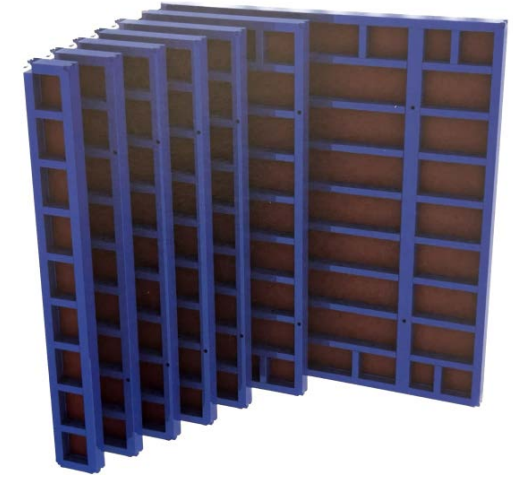
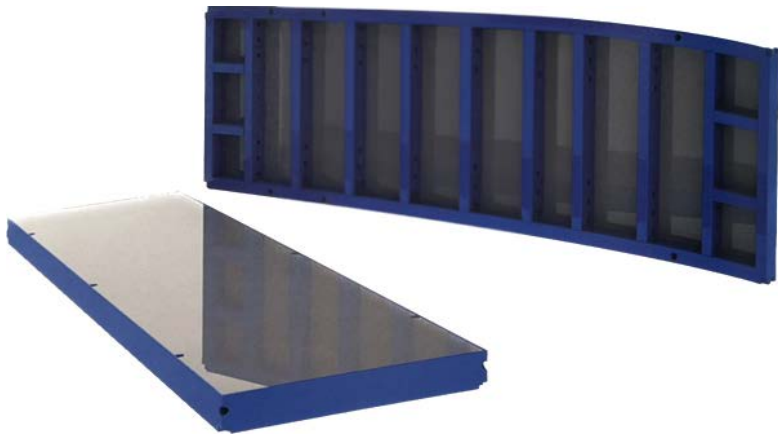
TAMON formwork lock could be applied to any point on the frame profiles as well as transversals. The conical holes for tie-rods on panel are so positioned that formwork bears 80 kN/m<sup>2</sup> concrete pressure. The formwork system consists of VINC'I panels, Tamon locks, tie-rods, VINC'I crane hooks, VINC'I type cat-walk brackets, double push-pull props and accessories

## WALL PANELS



Series	Item	Item No.	Weight
VINC'® 80 WALL PANELS	VS-S B 30 x 120 ply	030 083 10312 00	29,03 kg
	VS-S B 45 x 120 ply	030 083 10412 00	36,15 kg
	VS-S B 60 x 120 ply	030 083 10612 00	46,11 kg
	VS-S B 75 x 120 ply	030 083 10712 00	52,97 kg
	VS-S B 90 x 120 ply	030 083 10912 00	62,66 kg
	VS-S B 120 x 120 ply	030 083 11212 00	85,67 kg
	VS-S B 30 x 150 ply	030 083 10315 00	37,20 kg
	VS-S B 45 x 150 ply	030 083 10415 00	45,80 kg
	vs.s B 60 x 150 ply	030 083 10615 00	57,22 kg
	VS-S B 75 x 150 ply	030 083 10715 00	65,46 kg
	VS-S B 90 x 150 ply	030 083 10915 00	76,53 kg
	VS-S B 120 x 150 ply	030 083 11215 00	103,48 kg
	VS-S B 30 x 180 ply	030 083 10318 00	45,30 kg
	VS-S B 45 x 180 ply	030 083 10418 00	55,36 kg
	VS-S B 60 x 180 ply	030 083 10618 00	68,26 kg

Series	Item	Item No.	Weight
VINC'® 80 WALL PANELS	VS-S B 75 x 180 ply	030 083 10718 00	77,88 kg
	VS-S B 90 x 180 ply	030 083 10918 00	90,34 kg
	VS-S B 120 x 180 ply	030 083 11218 00	121,23 kg
	VS-S B 30 x 270 ply	030 083 10327 00	64,52 kg
	VS-S B 45 x 270 ply	030 083 10427 00	79,00 kg
	VS-S B 120 x 300 ply	030 083 11230 00	186,13 kg
	VS-S B 240 x 300 ply	030 083 12430 00	429,45 kg
	VS-S B 30 x 330 ply	030 083 10333 00	78,26 kg
	VS-S B 45 x 330 ply	030 083 10433 00	95,67 kg
	VS-S B 60 x 330 ply	030 083 10633 00	115,93 kg
	VS-S B 75 x 330 ply	030 083 10733 00	132,46 kg
	VS-S B 90 x 330 ply	030 083 10933 00	151,82 kg
	VS-S B 120 x 330 ply	030 083 11233 00	214,19 kg
	VS-S B 240 x 330 ply	030 083 12433 00	468,57 kg



Series	Item	Item No.	Weight
VINC'® 70 WALL PANELS	VY-S B 30x120 ply	030 073 10312 01	24,63 kg
	VY-S B 45x120 ply	030 073 10412 01	30,36 kg
	VY-S B 60x120 ply	030 073 10612 01	38,73 kg
	VY-S B 75x120 ply	030 073 10712 01	44,25 kg
	VY-S B 90x120 ply	030 073 10912 01	52,42 kg
	VY-S B 120x120 pl	030 073 11212 01	76,36 kg
	VY-S B 30x150 ply	030 073 10315 01	29,93 kg
	VY-S B 45x150 ply	030 073 10415 01	36,72 kg
	VY-S B 60x150 ply	030 073 10615 01	46,37 kg
	VY-S B 75x150 ply	030 073 10715 01	53,10 kg
	VY-S B 90x150 ply	030 073 10915 01	62,46 kg
	VY-S B 120x150 ply	030 073 11215 01	91,16 kg
	VY-S B 30x180 ply	030 073 10318 01	34,82 kg
	VY-S B 45x180 ply	030 073 10418 01	43,09 kg
	VY-S B 60x180 ply	030 073 10618 01	54,01 kg
	VY-S B 75x180 ply	030 073 10718 01	61,93 kg

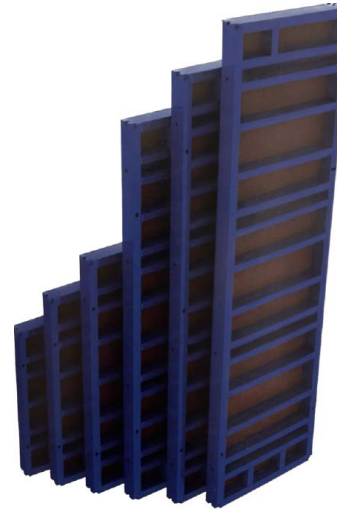
Series	Item	Item No.	Weight
VINC'® 70 WALL PANELS	VY-S B 90x180 ply	030 073 10918 01	72,51 kg
	VY-S B 120x180 ply	030 073 11218 01	105,97 kg
	VY-S B 30x270 ply	030 073 10327 01	52,16 kg
	VY-S B 45x270 ply	030 073 10427 01	64,84 kg
	VY-S B 60x270 ply	030 073 10627 01	79,58 kg
	VY-S B 75x270 ply	030 073 10727 01	91,11 kg
	VY-S B 90x270 ply	030 073 10927 01	108,36 kg
	VY-S B 120x270 ply	030 073 11227 01	155,91 kg
	VY-S B 240x270 ply	030 073 12427 01	354,74 kg
	VY-S B 30x300 ply	030 073 10330 01	58,31 kg
	VY-S B 45x300 ply	030 073 10430 01	71,69 kg
	VY-S B 60x300 ply	030 073 10630 01	87,70 kg
	VY-S B 75x300 ply	030 073 10730 01	100,03 kg
	VY-S B 90x300 ply	030 073 10930 01	118,88 kg
	VY-S B 120x300 ply	030 073 11230 01	171,39 kg
	VY-S B 240x300 ply	030 073 12430 01	392,94 kg

## COLUMN PANELS



Series	Item	Item No.	Weight
VINC'® 80 COLUMN PANELS	VS-K B 75 x 120 ply	030 082 10712 00	55,68 kg
	VS-K B 90 x 120 ply	030 082 10912 00	66,23 kg
	VS-K B 105 x 120 ply	030 082 11012 00	75,81 kg
	VS-K B 120 x 120 ply	030 082 11212 00	88,50 kg
	VS-K B 75 x 150 ply	030 082 10715 00	68,18 kg
	VS-K B 90 x 150 ply	030 082 10915 00	80,11 kg
	VS-K B 105 x 150 ply	030 082 11015 00	92,08 Kg
	VS-K B 120 x 150 ply	030 082 11215 00	106,32 kg
	VS-K B 75 x 180 ply	030 082 10718 00	80,60 kg
	VS-K B 90 x 180 ply	030 082 10918 00	93,91 kg
	VS-K B 105 x 180 ply	030 082 11018 00	108,28 kg
	VS-K B 120 x 180 ply	030 082 11218 00	124,06 kg

Series	Item	Item No.	Weight
VINC'® 80 COLUMN PANELS	VS-K B 75 x 270 ply	030 082 10727 00	115,58 kg
	VS-K B 90 x 270 ply	030 082 10927 00	133,98 kg
	VS-K B 105 x 270 ply	030 082 11027 00	163,78 kg
	VS-K B 120 x 270 ply	030 082 11227 00	185,50 kg
	VS-K B 75 x 300 ply	030 082 10730 00	127,00 kg
	VS-K B 90 x 300 ply	030 082 10930 00	146,79 kg
	VS-K B 105 x 300 ply	030 082 11030 00	169,51 kg
	VS-K B 120 x 300 ply	030 082 11230 00	192,09 kg
	VS-K B 75 x 330 ply	030 082 10733 00	137,96 kg
	VS-K B 90 x 330 ply	030 082 10933 00	159,13 kg
	VS-K B 105 x 330 ply	030 082 11033 00	195,34 kg
	VS-K B 120 x 330 ply	030 082 11233 00	220,15 kg



Series	Item	Item No.	Weight
VINC' @ 70 COLUMN PANELS	VY-K B 75x120 ply	030 072 10712 01	47,88 kg
	VY-K B 90x120 ply	030 072 10912 01	57,23 kg
	VY-K B 105x120 ply	030 072 11012 01	67,98 kg
	VY-K B 120x120 ply	030 072 11212 01	78,63 kg
	VY-K B 75x150 ply	030 072 10715 01	56,72 kg
	VY-K B 90x150 ply	030 072 10915 01	67,28 kg
	VY-K B 105x150 ply	030 072 11015 01	81,28 kg
	VY-K B 120x150 ply	030 072 11215 01	93,44 kg
	VY-K B 75x180 ply	030 072 10718 01	65,56 kg
	VY-K B 90x180 ply	030 072 10918 01	77,32 kg

Series	Item	Item No.	Weight
VINC' @ 70 COLUMN PANELS	VY-K B 105x180 ply	030 072 11018 01	94,57 kg
	VY-K B 120x180 ply	030 072 11218 01	108,25 kg
	VY-K B 75x270 ply	030 072 10727 01	97,47 kg
	VY-K B 90x270 ply	030 072 10927 01	114,18 kg
	VY-K B 105x270 ply	030 072 11027 01	138,28 kg
	VY-K B 120x270 ply	030 072 11227 01	157,21 kg
	VY-K B 75x300 ply	030 072 10730 01	109,59 kg
	VY-K B 90x300 ply	030 072 10930 01	127,50 kg
	VY-K B 105x300 ply	030 072 11030 01	154,86 kg
	VY-K B 120x300 ply	030 072 11230 01	175,30 kg

## CORNER ELEMENTS

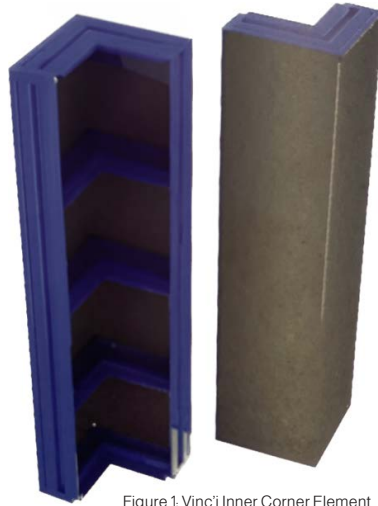


Figure 1. Vinc'i Inner Corner Element

Series	Item	Item No.	Weight
VINC'I 80 INNER CORNER ELEMENT	SI-K B 120 ply	030 085 10012 00	38,55 kg
	SI-K B 150 ply	030 085 10015 00	47,95 kg
	SI-K B 180 ply	030 085 10018 00	57,27 kg
	SI-K B 270 ply	030 085 10027 00	80,17 kg
	SI-K B 300 ply	030 085 10030 00	88,50 kg
	SI-K B 330 ply	030 085 10033 00	96,36 kg

Series	Item	Item No.	Weight
VINC'I 70 INNER CORNER ELEMENT	YI-K B 120 ply	030 075 10012 01	33,06 kg
	YI-K B 150 ply	030 075 10015 01	40,46 kg
	YI-K B 180 ply	030 075 10018 01	47,89 kg
	YI-K B 270 olv	030 075 10027 01	68,90 kg
	YI-K B 300 ply	030 075 10030 01	76,66 kg



Figure 2. Vinc'i Articulated Inner Corner

Series	Item	Item No.	Weight
VINC'I 80 ARTICULATED INNER CORNER ELEMENT	SM-K B 120	030 085 04012 00	46,60 kg
	SM-K B 150	030 085 04015 00	54,63 kg
	SM-K B 180	030 085 04018 00	66,81 kg
	SM-K B 270	030 085 04027 00	98,75 kg
	SM-K B 300	030 085 04030 00	108,85 kg
	SM-K B 330	030 085 04033 00	116,52 kg

Series	Item	Item No.	Weight
VINC'I 70 ARTICULATED INNER CORNER ELEMENT	YM-K B 120	030 075 04012 01	46,21 kg
	YM-K B 150	030 075 04015 01	56,26 kg
	YM-K B 180	030 075 04018 01	67,61 kg
	YM-K B 270	030 075 04027 01	99,09 kg
	YM-K B 300	030 075 04030 01	109,61 kg





Figure 3. E-Z Strip Corner Panel

Series	Item	Item No.	Weight
E-Z STRIP CORNER PANEL	SV-K B 120	030 085 03012 00	84,39 kg
	SV-K B 150	030 085 03015 00	102,40 kg
	SV-K B 180	030 085 03018 00	118,90 kg
	SV-K B 270	030 085 03027 00	174,12 kg
	SV-K B 300	030 085 03030 00	189,23 kg
	SV-K B 330	030 085 03033 00	206,43 kg



Figure 4. Vinci'i Outer Corner Element

Series	Item	Item No.	Weight
VINCI OUTER CORNER ELEMENT	VD-K B 120	030 087 00120 00	38,22 kg
	VD-K B 150	030 087 00150 00	46,77 kg
	VD-K B 180	030 087 00180 00	57,25 kg
	VD-K B 270	030 087 00270 00	85,80 kg
	VD-K B 300	030 087 00300 00	94,20 kg
	VD-K B 330	030 087 00330 00	103,6 kg



Figure 5. Vinci'i Strip Plate

Series	Item	Item No.	Weight
VINCI 80 STRIP PLATE	SS-P B 120	030 085 08012 00	15,50 kg
	SS.P B 150	030 085 08015 00	19,38 kg
	SS-P B 180	030 085 08018 00	23,25 kg
	SS-P B 270	030 085 08027 00	34,87 kg
	SS.P B 300	030 085 08030 00	38,75 kg
	SS-P B 330	030 085 08033 00	42,63 kg

Series	Item	Item No.	Weight
VINCI 70 STRIP PLATE	YS-P B 120	030 075 05012 01	12,80 kg
	YS-P B 150	030 075 05015 01	16,00 kg
	YS-P B 180z	030 075 05018 01	19,20 kg
	YS-P B 270	030 075 05027 01	28,80 kg
	YS-P B 300	030 075 05030 01	32,00 kg

## OTHER ELEMENTS



Figure 6: Vinci Waller



Figure 7: Vinci Spanner

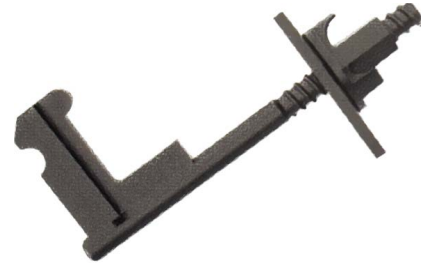


Figure 8: Stop End Spanner

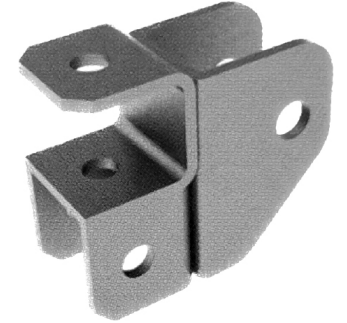


Figure 9: Prop Head Plate

Series	Item	Item No.	Weight
VINCI WALLER & SPANNER	VC-K G	030 187 00080 00	9,09 kg
	VC-E G	030 187 00032 00	2,25 kg

Series	Item	Item No.	Weight
STOP END SPANNERS AND COLUMN LOCKS	VC-A G	030 187 00030 00	3,30 kg
	VK-K G	030 187 00280 00	2,08 kg
	PV-Y G 72	030 112 00072 00	3,19 kg
	PV-S G 82	030 112 00082 00	3,20 kg
	YM-LG	030 170 00290 00	3,55 kg

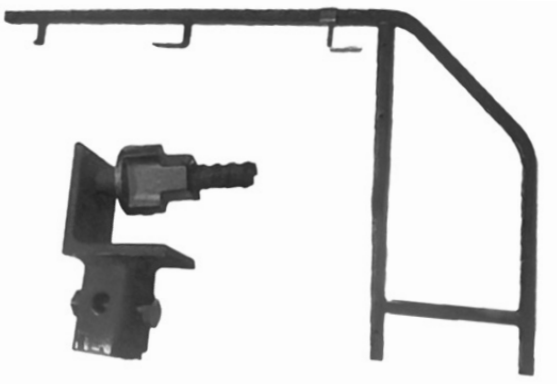


Figure 10: Catwalk Bracket Integrated Type

Series	Item	Item No.	Weight
CATWALK BRACKET	BD-K B ent	030 010 00100 00	6,50 kg
	BD-B B prf 100	030 010 00110 00	1,25 kg

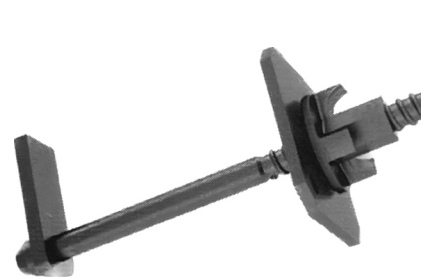


Figure 11: Column Lock



Figure 12: Multi Panel Lock

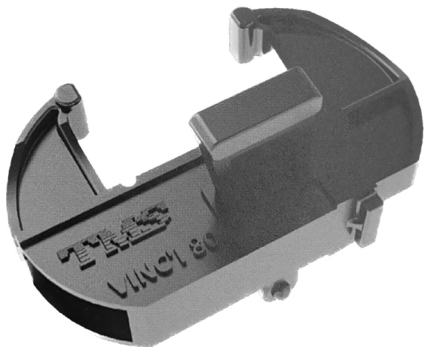


Figure 13: Panel Lock - Tamon 80



Figure 16: Crane Hook - Type 70

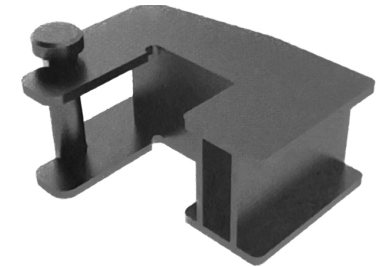


Figure 17: Spanner Bracket

Series	Item	Item No.	Weight
PANEL LOCKS - TAMON	YT-K G 70	004 135 00270 01	2,77 kg
	TU-T G 70	030 170 00110 01	4,17 kg
	ST-K G 80	004 135 00280 00	3,42kg
	TU-T G 80 dkm	030 180 00130 00	5,30 kg

Series	Item	Item No.	Weight
CRANE HOOKS	YK-V G	030 170 00150 01	9,22 kg
	YT-Y G	030 170 00298 01	2,03 kg
	SK-V G Tüv	030 180 00155 00	11,46 kg
	SY-K G	030 180 00303 00	3,15 kg

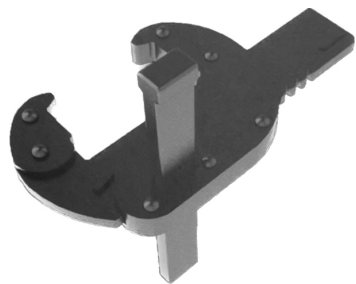


Figure 14: Panel Lock - Type 70

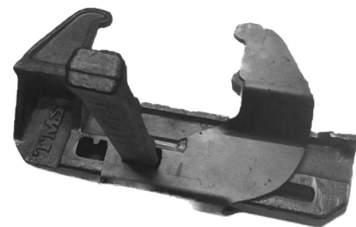


Figure 15: Panel Lock TU-T 80



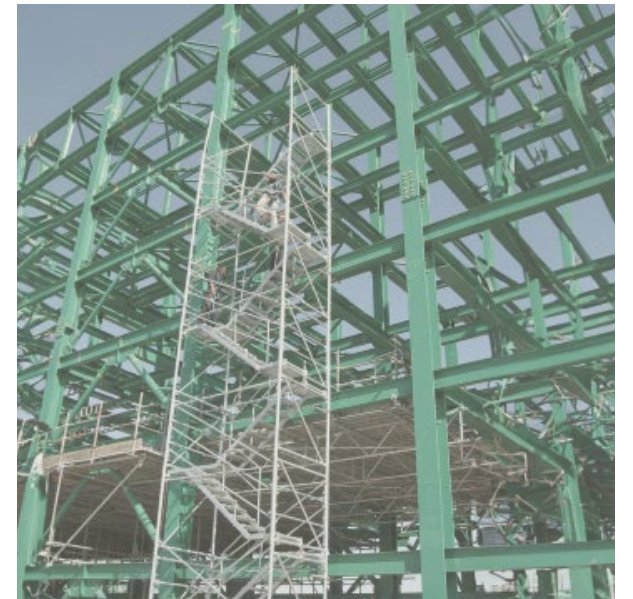
Figure 18: Panel Lock - Type 70














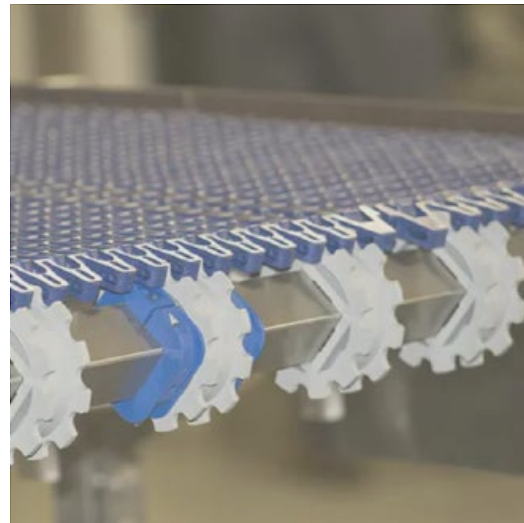
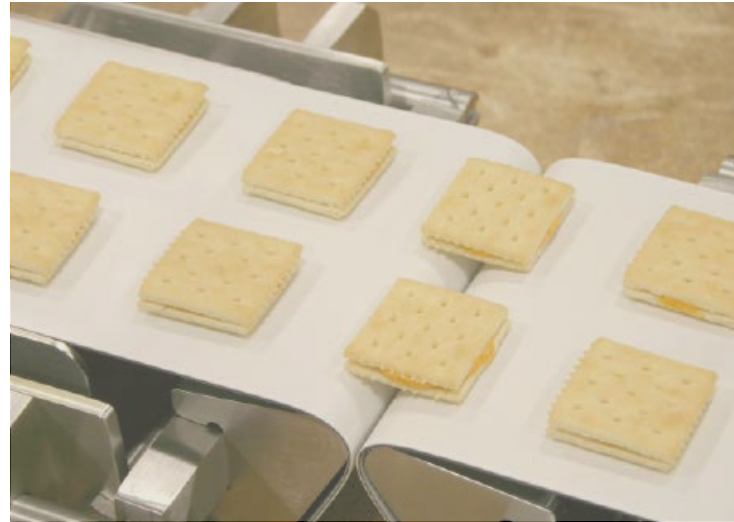


# OTHER PRODUCTS

## INDUSTRIES

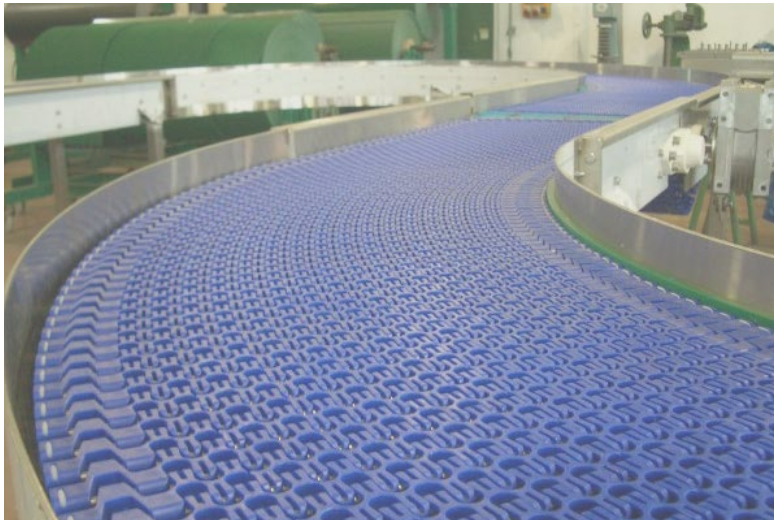
- Airport Ground Support
- Services Automotive Industry
- Canned Food Industry
- Beverage Industry
- Carton Box Folding Industry
- Fruit Industry
- Fitness Centers
- Folder Gluer Machineries
- Integrated Meat Establishments
- Logistic
- Marble , Granite & Ceramic Industry
- Packing Industry
- Paper Industry
- Printing Machineries
- Industrial Power Transmission Belts
- Tobacco Industry
- Mechanical Fasteners
- Conveyor Accessories
- Wood & Furniture Industry
- Yarn Industry





## MANUFACTURING

We provide maximum service life for your Heavy Duty or lightweight conveyor belting saving you money and reducing downtime. We have a full line of conveyor belting products along with a full menu of fabrication services. Our belting products include flat belts, custom conveyor belting, modular plastic belting, timing conveyor belts, and more that meet industry standards for even the most challenging requirements.



## CONVEYOR BELT SYSTEMS SPECIAL SERVICES

- Custom conveyor belts and fabrications
- Conveyor belt tracking and alignment services
- Conveyor belt troubleshooting
- Evaluations
- Installation assistance
- Modifications and retrofits





## PRODUCTS

- Conveyor belts
- Modular belts
- Plastic & steel chain
- Power transmission belts
- Timing belts
- V-belt
- Wire belts
- Bearings
- Rubber belts



## HEAT EXCHANGER



## PRESSURE VESSEL



## SILOS



## STEEL PLATFORM



## TANKS





سهيل للتشكيلات المعدنية  
SUHAIL METAL FORMINGS

Powered by **TMS**

- 📍 Msheireb, Building T05, 5<sup>th</sup> Floor, P.O. Box 8839, Doha, Qatar  
☎ +974 4427 5552  
📞 +974 4427 5554  
✉ info@suhailindustries.com  
🌐 www.suhailindustries.com

**YOUR  
RELIABLE  
PARTNER**

**f** **ig** **in** **tw** @suhailindustries