



سهيل للصناعات الهندسية
SUHAIL ENGINEERING INDUSTRIES



COMPANY CATALOGUE

INDEX

- Profile
- Capabilities
 - Engineering Capabilities
 - Manufacturing Capabilities
 - Testing Capabilities
- Certifications
- Products & Application Industries
 - Types of Machines in SEI
 - Aerospace Industries Products
 - Automotive Industries Products
 - Agriculture Industries Products
 - Oil and Gas Industries Products

PROFILE

ABOUT US

Suhail Engineering Industries (SEI) was built in the new industrial area in 2022, as a state-of-the-art CNC machining facility with the latest technologies. SEI is part of the leading establishment Suhail Industrial Holding Group in Qatar, which is active in supplying and exporting processed ferrous and non-ferrous metals products and industrial final products. In addition to having a solid business base and extensive market reach with strong logistic support and modern export facilities in several locations around the region. Which gives SEI an edge over other machining centres in the region.

WHAT WE DO

Suhail Engineering Industries (SEI), Specializing in high-speed CNC machining, fabrication, assembly, and testing of high-precision and high-complexity components offering a broad array of manufacturing services to Agricultural, Oil, and Gas, Aerospace, Automotive sectors, throughout the local and global market covering an area of 13500 m².

VISION

Be a world-class supplier of manufactured engineered machined components on a local and global market.

MISSION

Supporting Qatar's social and economic development.

- Improve local content by transferring technologies and developing human capital.
- Assist in the development of oil and gas, water, and other prospective industrial projects

Proactively involved with our major stakeholders.

- Taking care of our people, our community, and the environment.
- Focus on operational excellence in engineered product



FACILITIES

CAPABILITIES

It's all about performance! At SEI Industries we take pride in our productivity and efficiency in all operations. We have brand-new equipment from the best manufacturers in the business so that we always have the latest and most cost-efficient technology available.

ENGINEERING CAPABILITIES

1. Reverse Engineering Products
2. 3D Scanning, Modeling & 2D Drawings
3. CAM Programming
4. Tool Product Designing (Injection & Blow Mold)

MANUFACTURING CAPABILITIES

1. 3D Printings Products (Sand, Metal & Plastic)
2. CNC Machining; Milling, Turning, Drilling Wire-EDM, Sink-EDM, Surface & Cylindrical Grinding
3. Heat Treatment & Coating
4. Tube, Column Pipe & Line Shafts Assembly
5. Shafts & Tubes Straightening
6. Pump Testing

TESTING CAPABILITIES

1. Metrological Inspection (CMM, Laser Scanner & Measuring Instruments Vernier Caliper, Micrometer etc...)

CERTIFICATIONS

API, ISO9001:2015, ISO 14001:2015, and ISO 45001:2018

PRODUCTS & APPLICATIONS INDUSTRIES

1. Aerospace Industries
2. Automotive Industries
3. Agriculture Industries
4. Oil and Gas Industries



FACILITIES

TYPES OF MACHINES AVAILBLE AT SEI



CAPABILITIES

1.0 REVERSE ENGINEERING (3D SCANNING)

A method of creating a 3D virtual model from an existing physical part for use in 3D computer-aided design (CAD)

Leica Absolute Tracker AT960



FEATURES

- Accuracy $\pm 15 \mu\text{m}$ (0.015mm)
- Typical Rotation accuracy $\pm 0.01^\circ$
- Data output 1000 Points/Sec
- Automated Inspection Results
- six degrees of freedom (6DoF) probing

APPLICATIONS:

- Measuring Range up to 60 meters
- Delivery Data rate of up to 1000 Hertz
- For all types of industries

2.0 3D Modeling & 2D Drawing



FEATURES

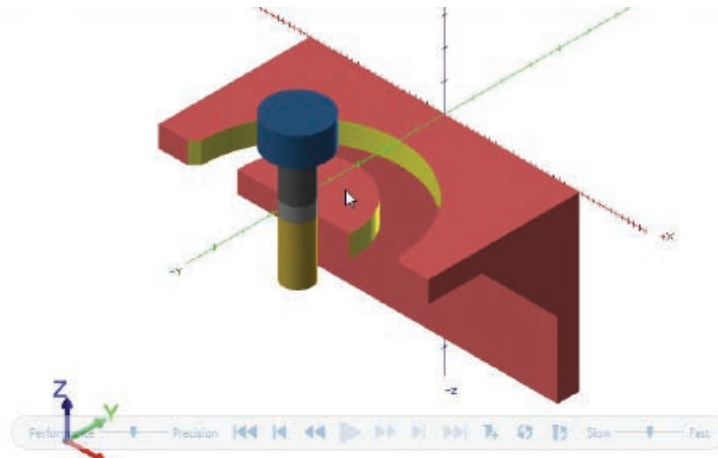
- Several Chairs
- 3D Model creation
- 2D-Drawing's creation
- CAM Program Creation
- standardized data management tools

APPLICATIONS:

- For all types of Industries
- Robust model files from nearly all CAD systems.

CAPABILITIES

3.0 CAM PROGRAMMING (Milling)

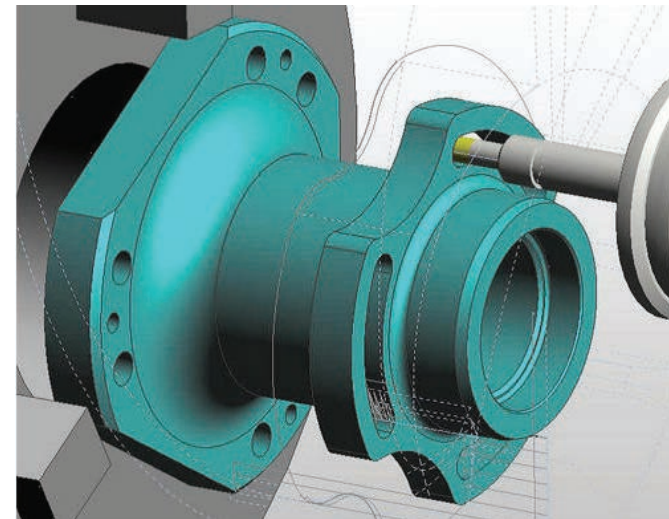
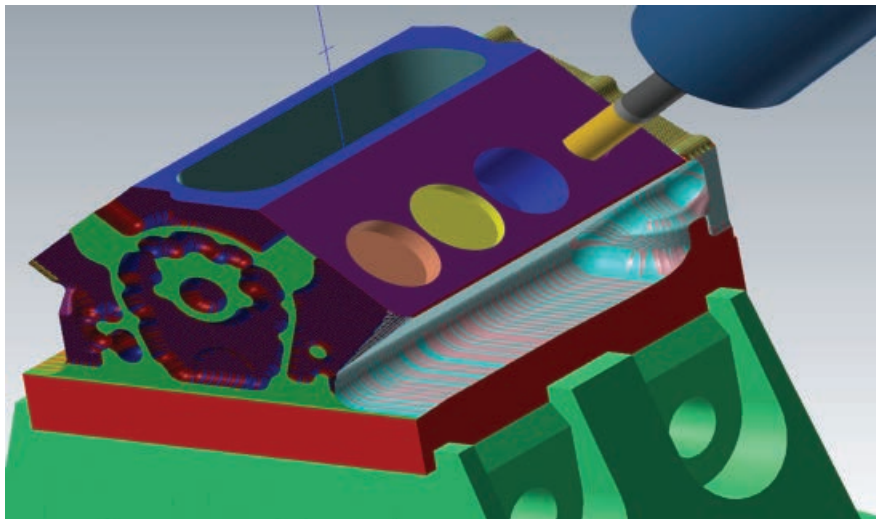


FEATURES

- Several Chairs
- CAM Program Creation
- 3,4 & 5 Axis
- standardized data management tools

APPLICATIONS:

- Manufacturing Industries



Product Design Capabilities



4.0 TOOL PRODUCT DESIGNING & MANUFACTURING (INJECTION AND BLOW MOLDS)

INJECTION MOLD

Injection moulding is the cyclical processing of plastics in the form of granules, involving injecting a plasticized material into moulding, in which it cools down to form a specific shape.



FEATURES

- . All plastic components mould
- . Pipe fittings Molds
- . Automotive connectors mould, etc.

BLOW MOLDS

SEI makes blow moulds for every product application, adapted to various shapes of containers. We make moulds from aluminium or stainless steel, in round, square, oval but also more complex shapes, with a wide variety of textures and decorations.



FEATURES

- . Oil cans Mold
- . Plastic Parts Mold
- . Food containers Mold

APPLICATIONS:

- . All types of plastic Industries

MANUFACTURING CAPABILITIES

1.0 3D PRINTING PRODUCTS(METAL, PLASTIC & SAND)

METAL 3D PRINTER



FEATURES

- Complex parts are not more difficult to 3D print than simple parts
- Cost per part is consistent at low and high volumes
- Metal 3D printing can create parts that are impossible to make with any other fabrication method

APPLICATIONS:

- stainless steel to copper
- Different alloys

PLASTIC 3D PRINTER



FEATURES

- Product developing
- Prototypes/High volume,
- Tensile Strength 800 MPa
- Flexible Design
- Thickness Repeatability 0.05mm (50µm)
- perfect surface finish
- Cost-Effective

APPLICATIONS:

- 330 x 270 x 200 mm (13 x 10.6 x 7.9 in)
- All industries
- Plastic Materials: Onyx, Onyx FR, Onyx ESD, Nylon White
- Fiber Materials: Carbon fiber, fiberglass, Kevlar®, HSHT fiberglass

MANUFACTURING CAPABILITIES

SAND 3D PRINTER

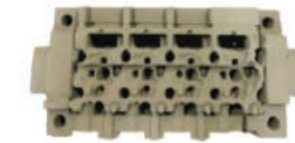


FEATURES

- Manufacture of complex cores and parts
- Complicated parts in a single build.
- Fast and economical manufacturing of large components and small batches

APPLICATIONS:

- Layer thickness 0.30 mm with 300 DPI
- LxHxW - 2000 x 1000 x 1000 mm



MANUFACTURING CAPABILITIES

2.0 CNC CENTER (MILLING & TURNING PRODUCTS)

MILLING PRODUCTS



FEATURES

- 3 Axis, 4Axis & 5Axis
- Auto Tool & Plate Changers
- Loading Capacity 2,000 Kgs
- High Speed and high precision Machines

APPLICATIONS:

- Precision Machining Parts
- All Steel and cast Materials
- All types of Manufacturing Industries

TURNING PRODUCTS



FEATURES

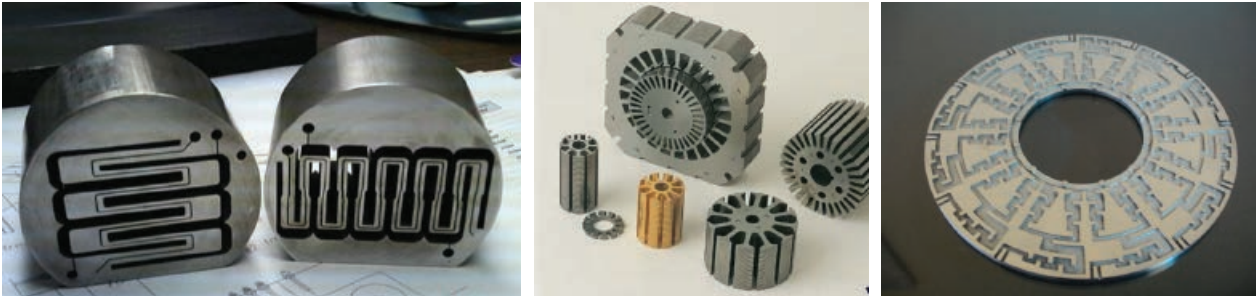
- Pipes, Tubes, bronzes bearing, couplings, etc...
- Bonnet
- Gland Flange.
- Seat Ring.

APPLICATIONS:

- Diameters up to 900mm
- Bar capacity of 318mm
- All kinds of materials

MANUFACTURING CAPABILITIES

WIRE CUT PRODUCTS



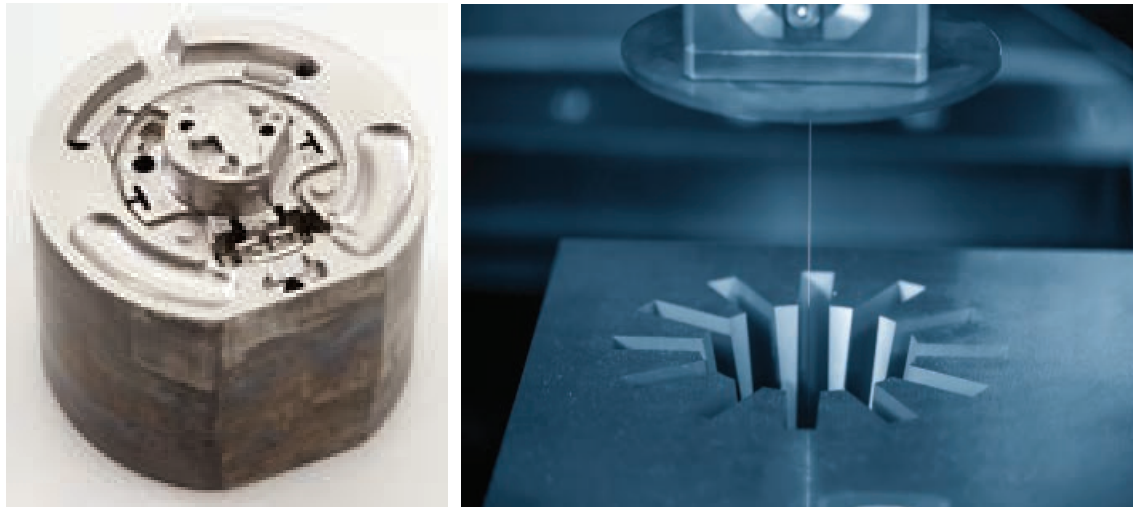
FEATURES

- High precision machining
- Complex parts with through profile cutting
- Surface Finish up 0.20Ra.
- Accuracy ± 0.001 mm

APPLICATIONS:

- machining range (X, Y, Z) 1650 x 1200 x 495mm
- All Metals

SINK EDM PRODUCTS



FEATURES

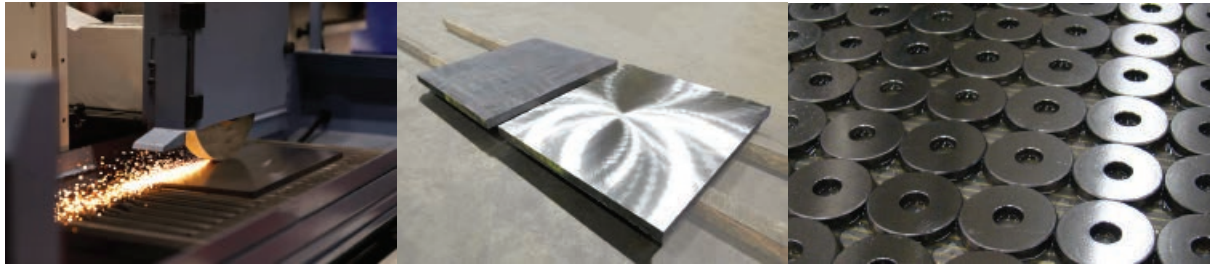
- High precision machining
- Complex profile machining
- Surface Finish up 0.20Ra.
- Accuracy ± 0.001 mm

APPLICATIONS:

- machining range (X, Y, Z) 1600 x 1000 x 500mm
- All Metals

MANUFACTURING CAPABILITIES

SURFACE GRINDING PRODUCTS



FEATURES

- Abrasive machining process
- High Accuracy ± 0.002 mm
- High surface finish 0.20 Ra

APPLICATIONS:

- Different sizes: 700 x1500 mm
- All types of metals

CYLINDRICAL GRINDING PRODUCTS



FEATURES

- Abrasive machining process for cylindrical components
- High Accuracy ± 0.002 mm
- High surface finish

APPLICATIONS:

- Diameters up to 400
- Lengths up to 1000 mm.
- All types of material

MANUFACTURING CAPABILITIES

3.0 SPECIAL PROCESSES (HEAT TREATMENT & PAINTING)

HEAT TREATMENT



FEATURES

- Advanced Technologies
- Annealing,
- Hardening & Tempering
- Stress Relieving
- All steel materials

APPLICATIONS:

- (W x H x L) 900 x 900 x 1200mm
- Load Gross weight 1500 Kg

PAINTING BOOTH



FEATURES

- Rust Preventive
- Improve product life
- Surface quality

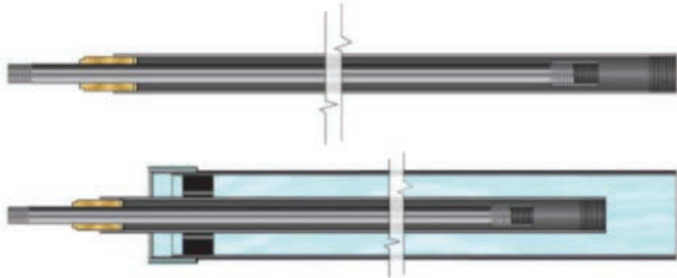
APPLICATIONS:

- Different alloys.
- All types of Industries

ASSEMBLY CAPABILITIES

4.0 TUBE & LINE SHAFT ASSEMBLY

Column pipe assembly



FEATURES

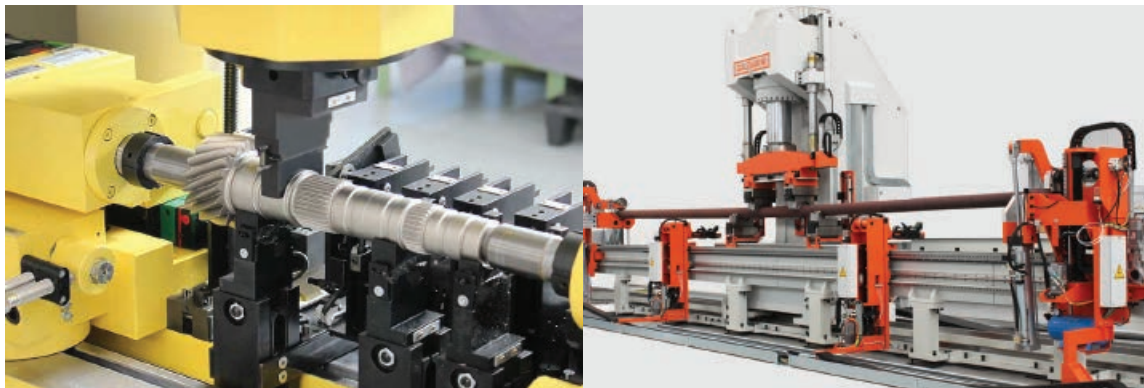
- Tube & Shaft Assembly
- Column Pipe assembly

APPLICATIONS:

- Pipes 4 - 12 "
- Tubes 1½ - 3 ½ "
- Shaft 1 - 2 3/16 "
- Vertical Turbine Pumps
- Agricultural Industries

5.0 SHAFT & TUBES STRAIGHTENING

Straightening of raw, seamless and stainless steel tubes



FEATURES

- Self-contained, mobile centrifugal pump test set for a range of experiments and demonstrationst

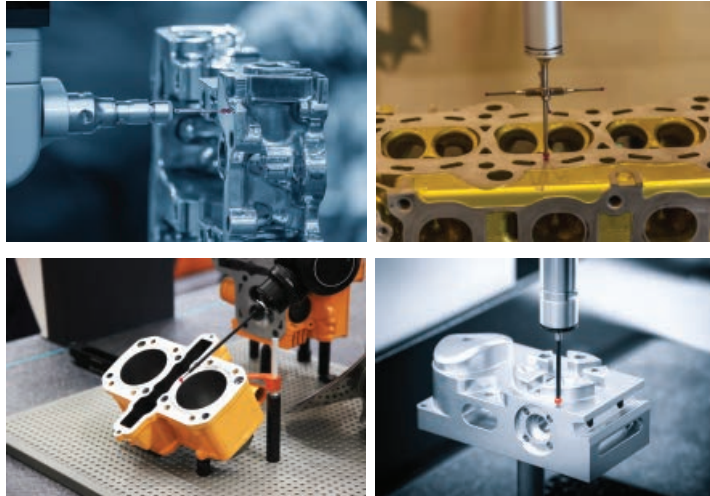
APPLICATIONS:

Gantry straightening machines with contact measuring unit or workpiece complete laser scanning available in different sizes (from 120 to 1000 T) or Twin straighteners with horizontally applied force up to 4000 T are possible among the solutions. Gantry machine is very efficient and simple in its concept, while Twin machine is more sophisticated and allows the straightening of the tubes extremities as well as the ovality correction, if required.

TESTING CAPABILITIES

1.0 METROLOGICAL INSPECTION

CMM MACHINE



FEATURES

- High Speed and Accurate Inspection
- Accuracy 1.3 μm (0.001mm)
- Geometrical Dimensions
- Dimensional and X, Y & Z Positions

APPLICATIONS:

- Measuring Range up to 1500 mm
- Any types of industries

MEASURING INSTRUMENTS



CERTIFICATIONS

QUALITY MANAGEMENT SYSTEMS



FEATURES

- QMS compliance with Oil and Gas Industries (API)
- QMS compliance with ISO 9001:2015S
- Environment Management System in compliance with ISO 14001:2015
- Occupational Health & Safety Management System in compliance with ISO 45001:2018





PRODUCTS OF SEI MACHINING CAPABILITIES

7.0 PRODUCTS & APPLICATIONS INDUSTRIES

1.0 AEROSPACE PRODUCTS



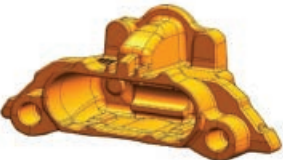
2.0 AUTOMOTIVE PRODUCTS



STEERING KNUCKLE



BRAKE CALIPER



BRACKET



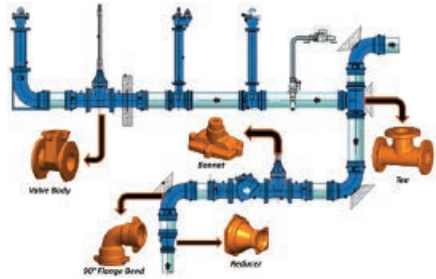
DIFFERENTIAL CASE



PRODUCTS OF SEI MACHINING CAPABILITIES



3.0 AGRICULTURE PRODUCTS



ROCKER ARMS



VALVE PARTS



AIR VALVE HOUSINGS



ROCKER ARMS



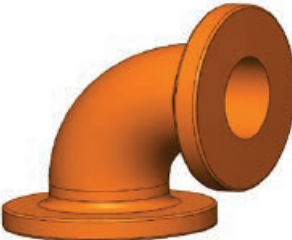
GEARBOX COVERS



TRANSDUCERS



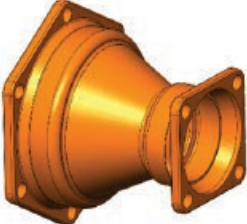
L- BENDS



I-CROSECTIONS



DIVERGENTS

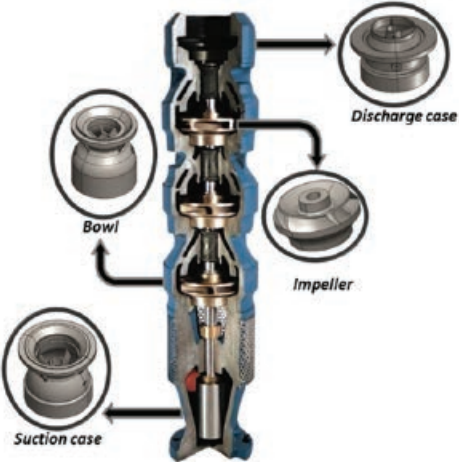




PRODUCTS OF SEI MACHINING CAPABILITIES

4.0 OIL AND GAS PRODUCTS

VERTICAL TURBINE PUMP PARTS



SUBMERSIBLE PUMP PARTS



GLOBE VALVES PARTS



X-MASS TREE PARTS



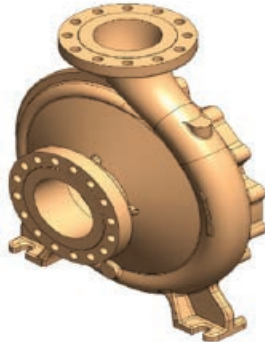
GATE VALVE PARTS



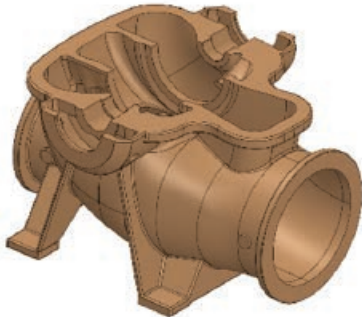
PIPE & Tube COUPLINGS



PUMP CASE PARTS



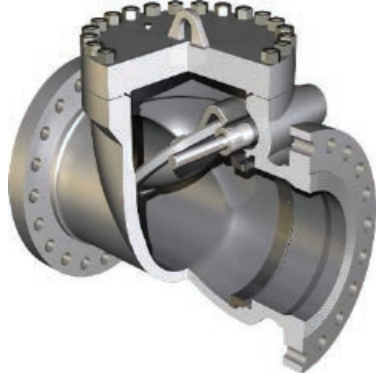
BOTTOM PUMP PARTS



IMPELLERS



CHECK VALVE PARTS



PRODUCTS OF SEI MACHINING CAPABILITIES

PUMPS PARTS (VTP & SUBMERSIBLE)



VERTICAL TURBINE PUMP



FEATURES

Parts:

- Impeller.
- Intermediate Bowl.
- Shaft.
- Bronze bearing.
- Suction case.
- Discharge case
- Strainer

APPLICATIONS:

- Different alloys (Cast iron, Bronze, Stainless Steel...)
- From 4" to 16" diameter

SUBMERSIBLE PUMP



FEATURES

Parts:

- Impeller.
- Intermediate Bowl.
- Shaft.
- Bearing.
- Mesh

APPLICATIONS:

- From 4" to 16" diameter

PRODUCTS OF SEI MACHINING CAPABILITIES

PUMPS & TUBE PARTS (END SUCTION & X MAS TREE)



END SUCTION



FEATURES

Parts:

- Double suction impeller.
- Casing
- Shaft.

APPLICATIONS:

- Different alloys (Cast iron, Bronze, Stainless Steel...)
- From 4" to 16" diameter

X-MAS TREE



FEATURES

- Casing head housing
- Casing head spool
- Tubing adaptor
- Tubing head spool

OPTIONS

- Different sizes.
- API standard.

PRODUCTS OF SEI MACHINING CAPABILITIES



BALL VALVE



FEATURES

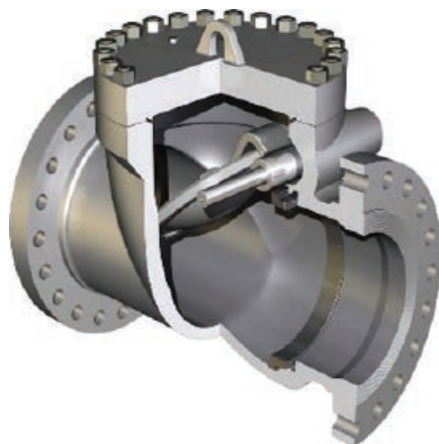
Parts:

- . Body.
- . Bonnet
- . Seat ring.
- . Ball

OPTIONS

- . From 4" to 12".
- . Different alloys.
- . API standard.

CHECK VALVE



FEATURES

Parts:

- . Body.
- . Bonnet
- . Disc.

OPTIONS

- . From 4" to 12".
- . Different alloys.
- . API standard.

PRODUCTS OF SEI MACHINING CAPABILITIES



VALVES PARTS

GLOBE VALVE



FEATURES

Parts:

- . Body
- . Bonnet
- . Gland Flange.
- . Back Seat.

OPTIONS

- . Different sizes: 4" to 14"
- . Different alloys.
- . API Standard.

GATE VALVE



FEATURES

Parts:

- . Body
- . Bonnet
- . Gland Flange.
- . Seat Ring.

OPTIONS

- . Different sizes: 4" to 14"
- . Different alloys.
- . API Standard



PRODUCTS OF SEI MACHINING CAPABILITIES

COLUMN ASSY.

PIPE

Machining Capabilities			
Pipe Sizes (Inch)	Maximum GPM	Length Feet	Length Feet
4"	100 to 450	10	20
5"	500 to 800	10	20
6"	900 to 1300	10	20
8"	1400 to 1900	10	20
10"	1800 to 2300	10	20
12"	2400 to 3500	10	20

FEATURES

- ERW pipes.
- Machining on Pipes
- Threading on Pipes

APPLICATION:

- Different sizes from 4" to 12".
- All types of schedules /Thickness.
- Different alloys
- Agricultural, irrigation solutions & waterworks industries





PRODUCTS OF SEI MACHINING CAPABILITIES

COLUMN ASSY.

TUBE

Machining Capabilities			
Pipe Sizes (Inch)		Length Feet	Length Feet
1½"	1"	10	20
2"	1 3/16"	10	20
2"	1 ¼"	10	20
2½"	1½"	10	20
2½"	1 11/16"	10	20
3"	1 15/16"	10	20
3½"	1"	10	20

FEATURES

- Machining on Pipes
- Threading on Pipes

APPLICATION:

- Different sizes from 1.5" to 3.5".
- Different lengths max 20 Feet.
- Agricultural, irrigation solutions & waterworks industries



LINE SHAFT



FEATURES

- Machined by high quality equipment's and tools.

APPLICATION:

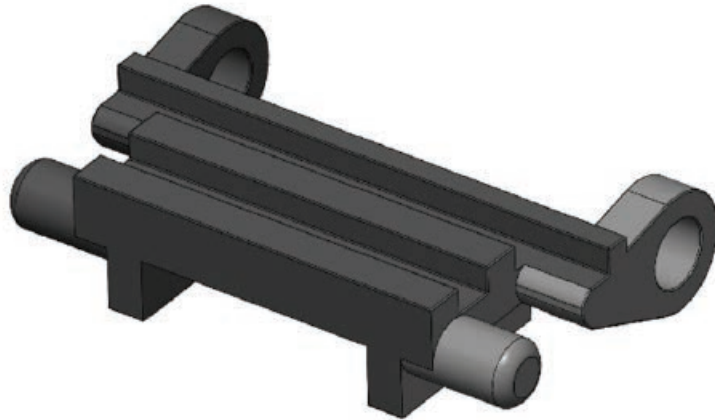
- Different sizes from 1.5" to 3.5".
- Different lengths max 20 Feet

PRODUCTS OF SEI MACHINING CAPABILITIES

COLUMN ASSY.



TRACK SHOE

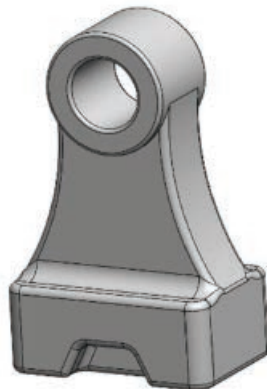


TEETH

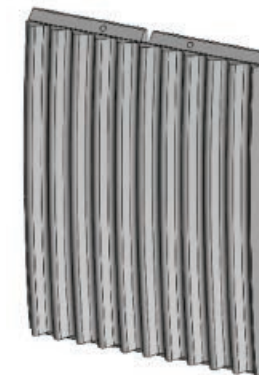


CRUSHER PARTS

STEEL SHREDDER HAMMER



CRUSHER DIE





سهيل للصناعات الهندسية
SUHAIL ENGINEERING INDUSTRIES

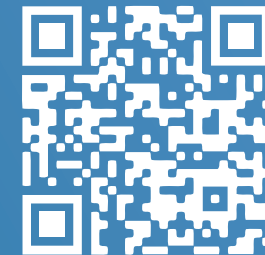
📍 Msheireb, Building T05, 5th Floor, P.O Box 8839, Doha, Qatar

☎ + 974 4427 5552

📞 +974 4427 5554

✉ info@suhailindustries.com

🌐 www.suhailindustries.com



PRIDE OF
QATARI
INDUSTRIES

📘 📷 🌐 🐦 @suhailindustries